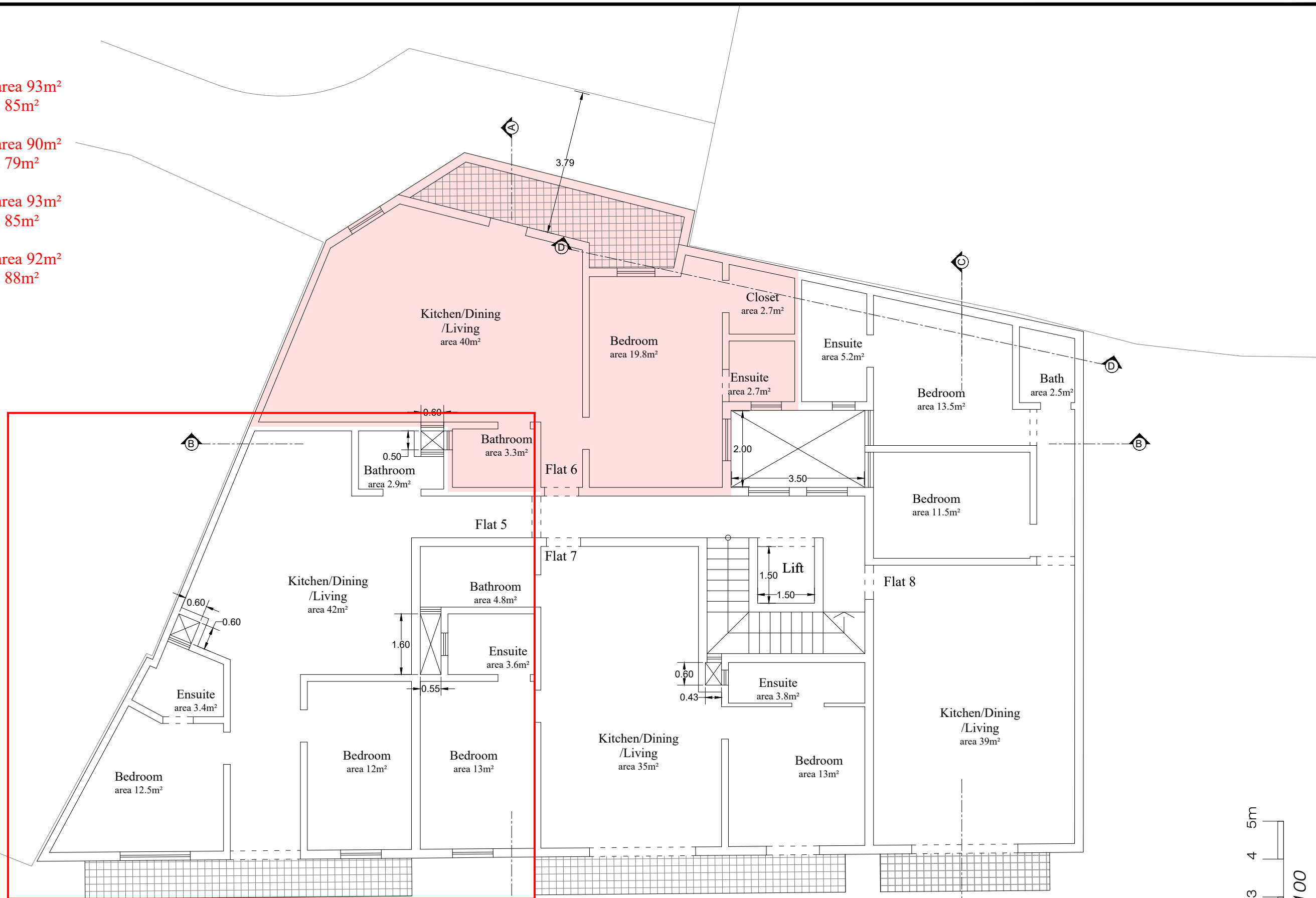


Flat 5 Gross floor area 93m<sup>2</sup>  
internal area 85m<sup>2</sup>

Flat 6 Gross floor area 90m<sup>2</sup>  
internal area 79m<sup>2</sup>

Flat 7 Gross floor area 93m<sup>2</sup>  
internal area 85m<sup>2</sup>

Flat 8 Gross floor area 92m<sup>2</sup>  
internal area 88m<sup>2</sup>



Proposed Second floor plan  
Scale 1:100

